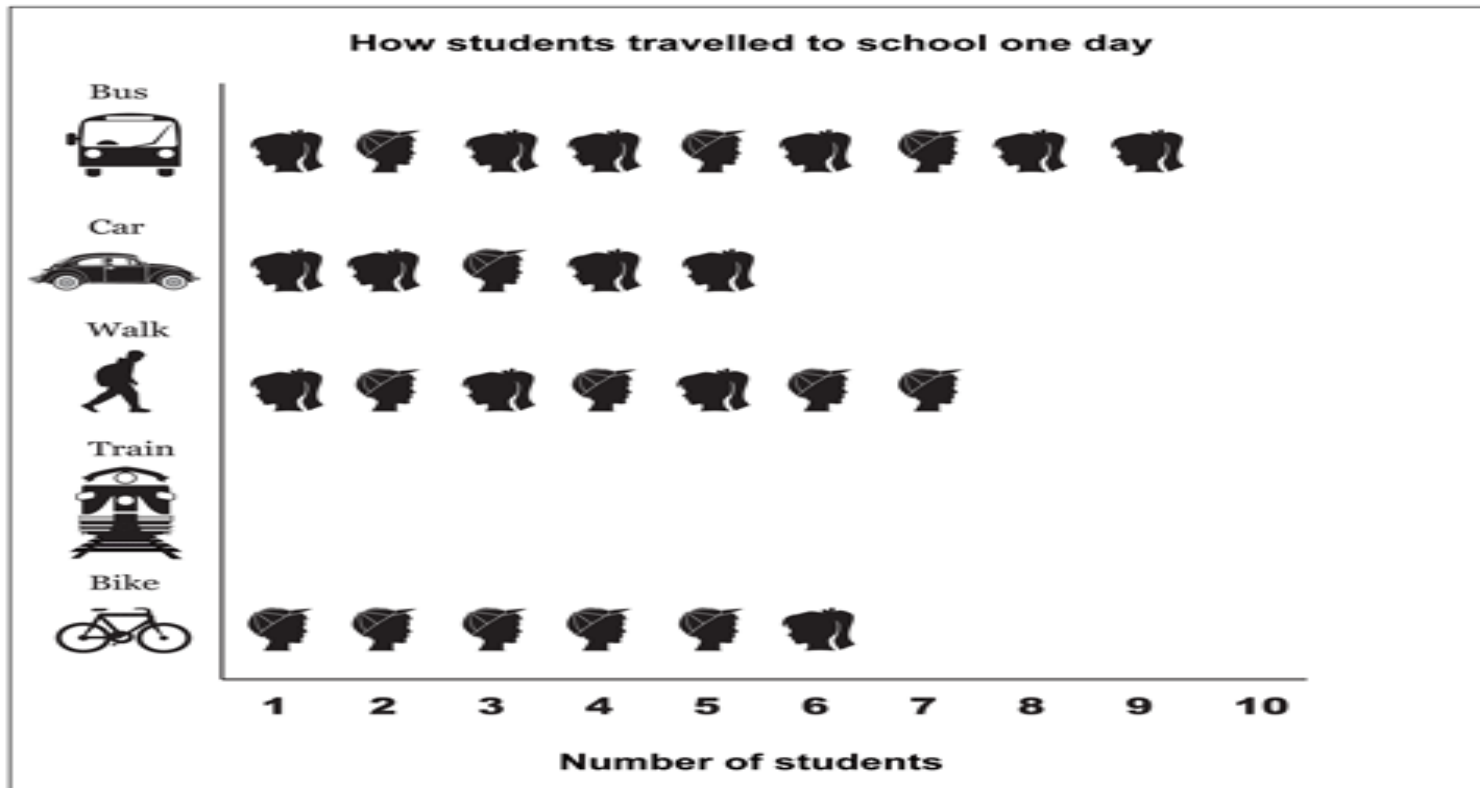


# Reading a Pictograph

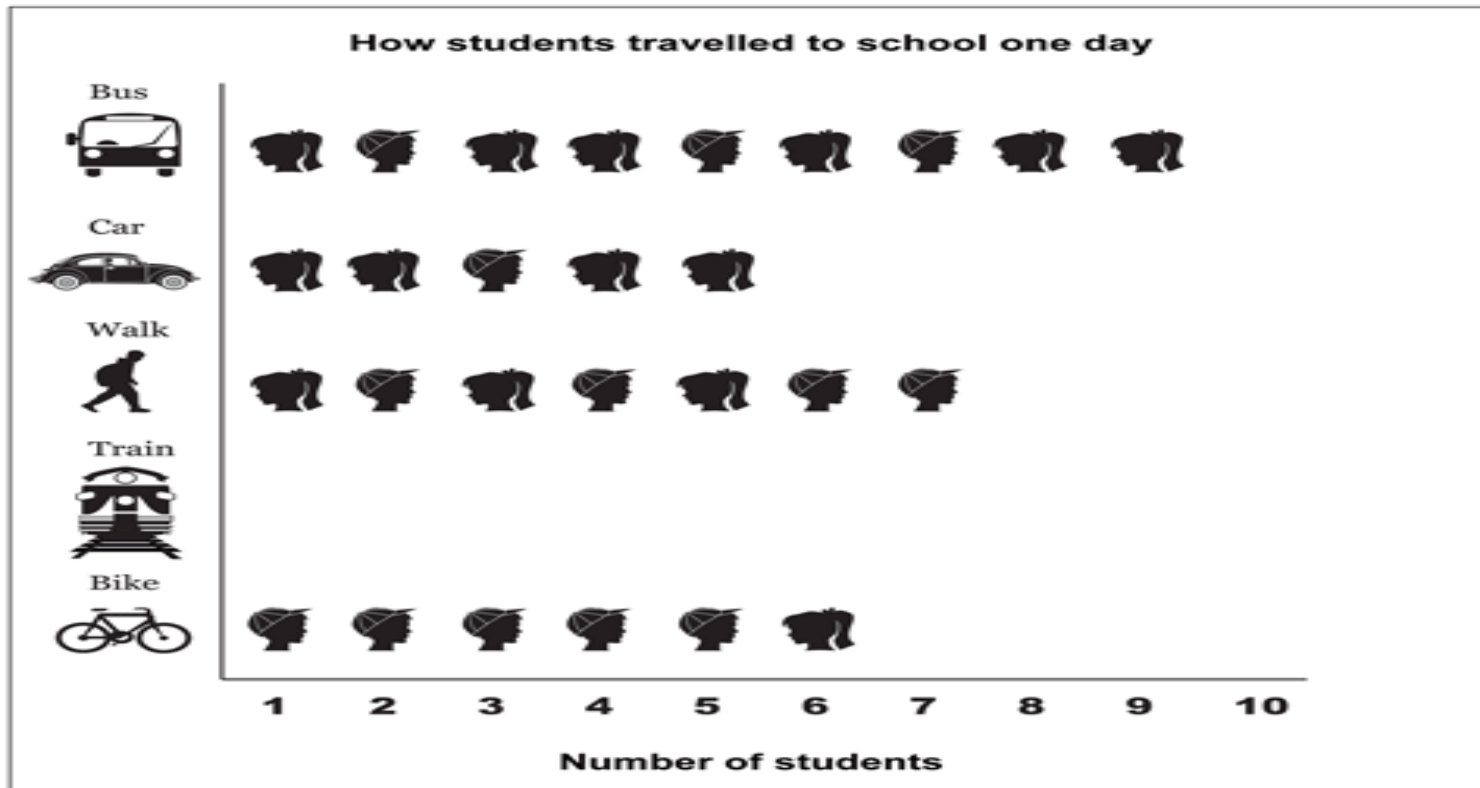




Use this graph to answer the following questions.

**Reading a pictograph is as easy  
as it looks!**

**Let's work the first question together:**

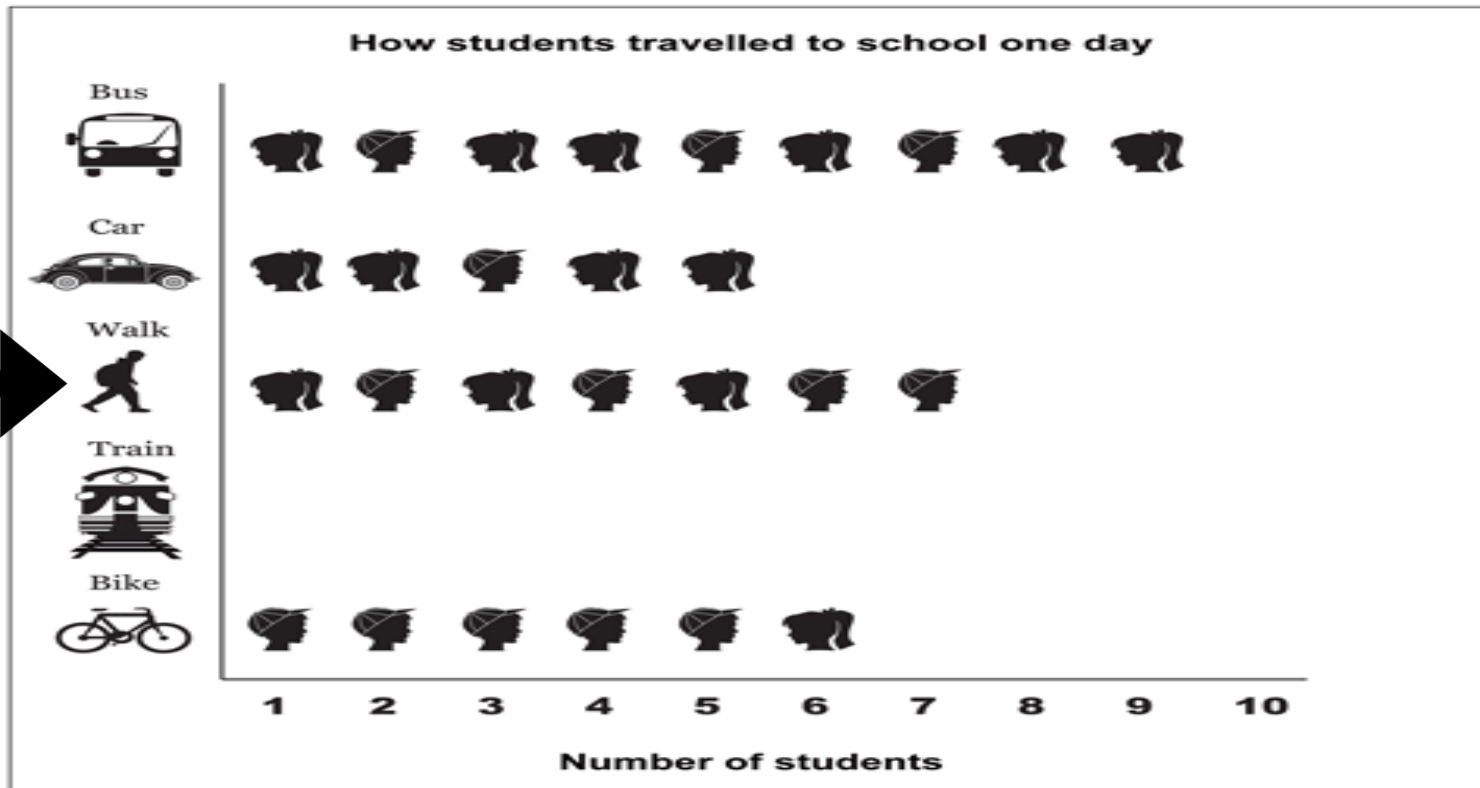


How many students walked to school?

First, find the type of transportation you are being asked about (walk).

Next, count the number of heads next to that transportation.

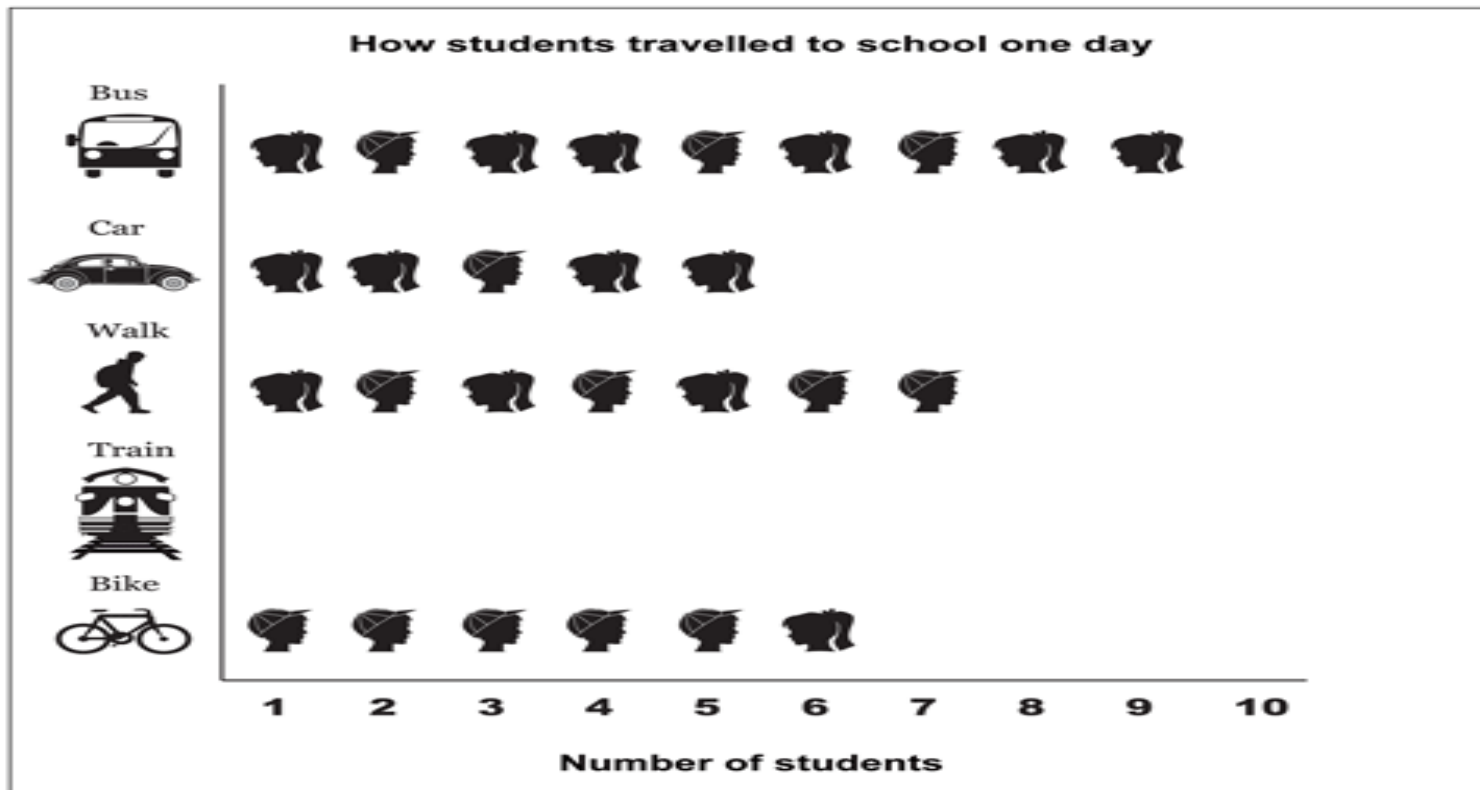




There are 7 heads, which means 7 students walked to school that one day.

**Try the next  
question!**

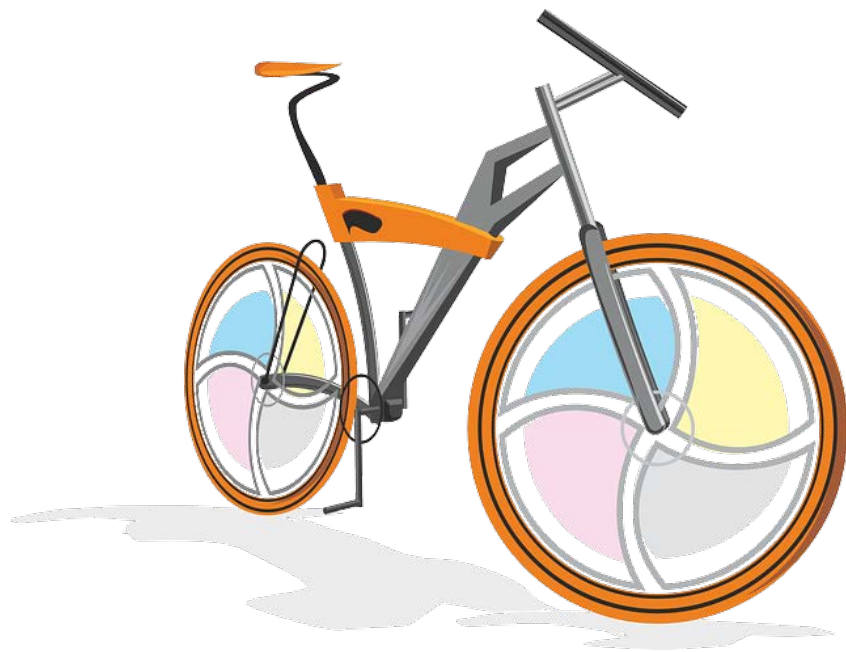




How many students rode a bike to school?

What do we need to find first?





Answer: Find the  
bike!

What is the next  
step?

---

Count the heads that rode a bike to school.

6 students rode their bikes to school that day.

